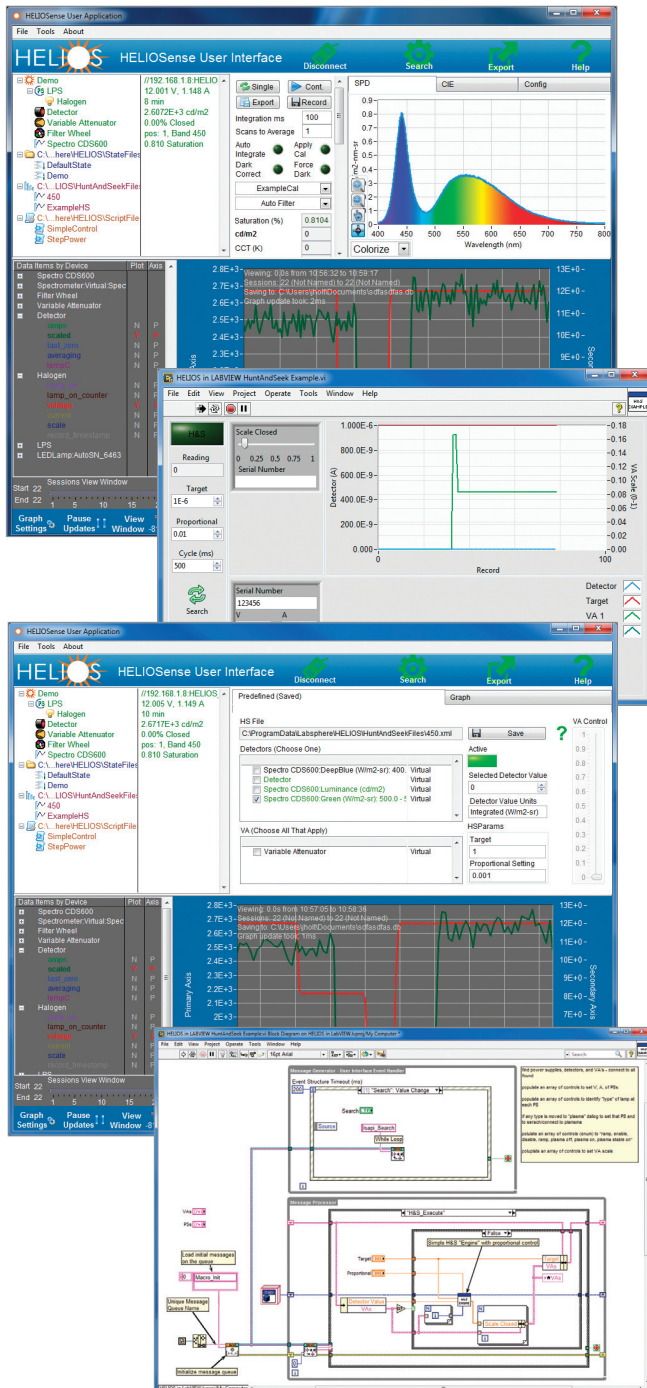




# HELIOS<sup>®</sup> Primary Interface Software

Built on the Integral<sup>®</sup> API Foundation with a LabVIEW<sup>™</sup> User Interface



HELIOSense Software is the primary interface for HELIOS components and systems. It is a flexible architecture where any hardware built into the Labsphere API (LSAPI) can be recognized and used in HELIOS systems.

## Software Features

- “State” functions that can be set up for system configurations, saved and re-accessed or password protected
- Scripting functions for simple programs inside and outside HELIOSense GUI
- TCP enabled scripting and communication functions
- Hunt & Seek functions using attenuators, detectors and spectrometers
- Continuous real-time asynchronous data logging with time stamps on all data parameters
- “Infinite” scrolling Display & Data session logging
  - Access to control settings and measured parameters
- SQLite database with export functions
- Calibration data interface for loading characterization files
- User-definable non-linear detector response tables for external Devices Under Test (DUTs)

## HELIOsense LOCAL and REMOTE Interfaces for D, A, L, V & S System Families

- LOCAL System Interface Options
  - Cube computer embedded in system rack for turn-key system performance (customer provides keyboard, video and mouse)
  - Installation of HELIOsense on any customer computer with single USB connection for system control
- REMOTE System Control Options
  - Networked HELIOsense software installation (Ethernet) using API Over-The-Wire Architecture
  - TCP scripting interface via Ethernet

## HELIOsense SDK

Engineering and software access based on the LSAPI infrastructure, the Software Development Kit (SDK) for HELIOsense opens programming and control in the following languages

- Engineering-friendly LabVIEW Instrument Driver and code access
- Software interface and code access for languages listed below
  - C and C++
  - C# and .NET
  - MATLAB® Toolbox
  - Programming documentation and Example Code provided for all language types
- Customer has to have an existing IDE for the chosen language/environment
- Requires existing HELIOsense Software installation
- Customer needs to supply their own PC with the installed IDE

